

AFFORDABLE HOUSING CATALOGUE 2023



VANTEM

About this Catalogue

NACA and Vantem Homes catalogue feature a collection of houses that embody the shared vision of the Neighborhood Assistance Corporation of America ("NACA") and Vantem.

The Neighborhood Assistance Corporation of America ("NACA") is a non-profit, community advocacy and homeownership organization. NACA's primary goal is to build strong, healthy neighborhoods in urban and rural areas nationwide through affordable homeownership.

Vantem simplifies construction, reducing costs and delivery times. A Next-Gen Modular Technology company delivering Energy-Efficient, Climate-Resilient, Cost-Effective Homes at Scale.



Vantem + NACA Affordable Housing Model example

Affordable Modular Housing

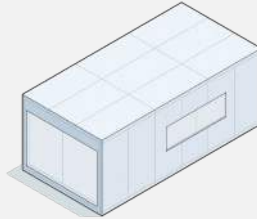
Vantem + NACA designs are optimized for construction using energy-efficient prefab structures, reducing costs and delivery times.



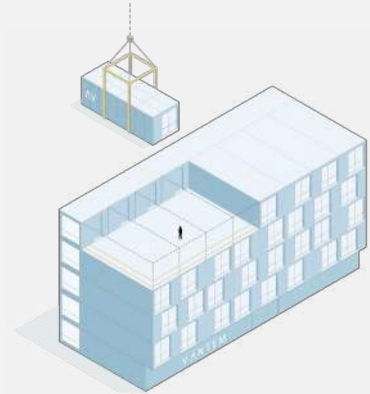
Panel Vantem



Fabrication



Prefab Module



On-site assembly

One-Story Housing Models

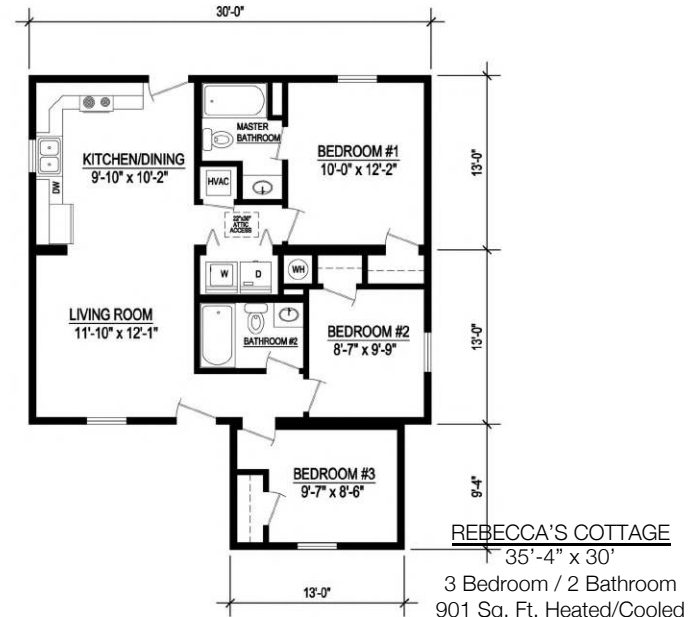


One-Story Models



Rebecca's Cottage

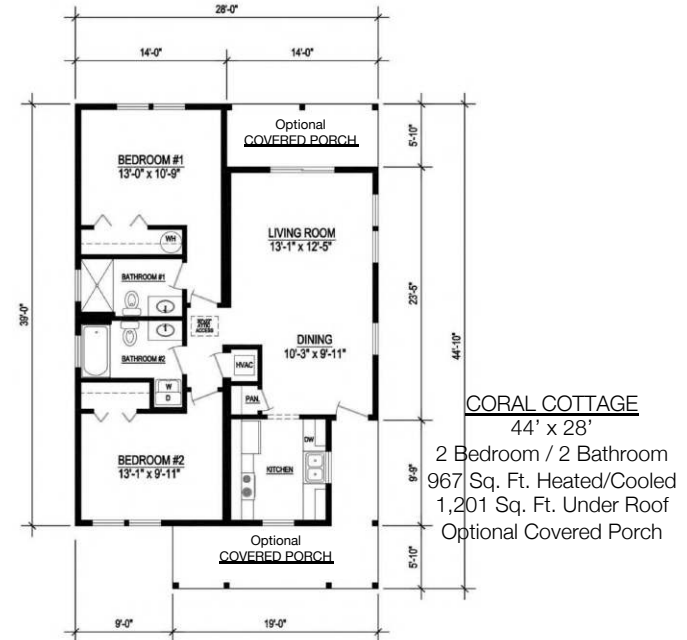
Rebecca's Cottage, inspired by English Cottage, features a half-hip roof providing 901 comfortable square feet with 3 bedrooms and 2 full baths.



The square footage and other dimensions on our floor plans are approximate. Renderings are not intended to be an accurate representation of the home and are often shown with optional features and/or third-party additions that can be added at additional cost if available in your region or situation.

Coral Cottage

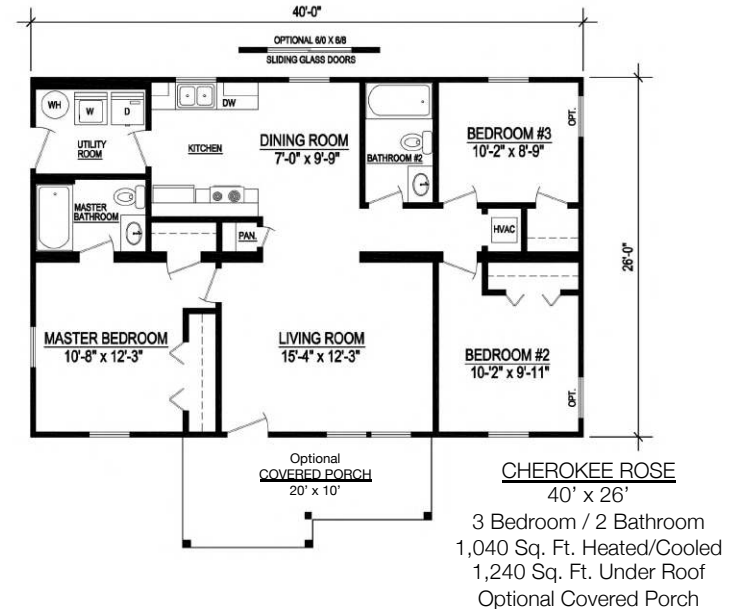
The Coral Cottage provides 967 square feet of heated/cooled living space, with a total of 1,201 Square Feet of optional covered area.



The square footage and other dimensions on our floor plans are approximate. Renderings are not intended to be an accurate representation of the home and are often shown with optional features and/or third-party additions that can be added at additional cost if available in your region or situation.

Cherokee Rose

The Cherokee Rose offers 1,040 Square Feet of heated and cooled living space, with a total of 1,240 Square Feet of optional covered area.



The square footage and other dimensions on our floor plans are approximate. Renderings are not intended to be an accurate representation of the home and are often shown with optional features and/or third-party additions that can be added at additional cost if available in your region or situation.

Fish Hawke

The Fish Hawke provides 1,088 square feet of heated/cooled space, with a total of 1,250 Square Feet of optional covered area.



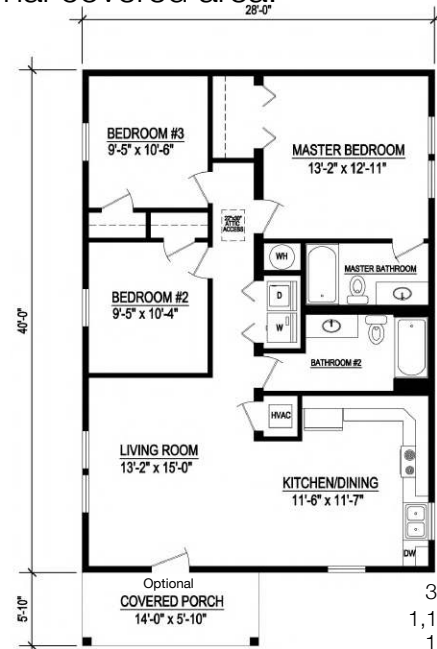
FISH HAWKE 51'-2" x 24'

3 Bedroom / 2 Bathroom
1,088 Sq. Ft. Heated/Cooled
1,250 Sq. Ft. Under Roof
Optional Covered Porch

The square footage and other dimensions on our floor plans are approximate. Renderings are not intended to be an accurate representation of the home and are often shown with optional features and/or third-party additions that can be added at additional cost if available in your region or situation.

Glenn Cove

The Glenn Cove provides 1,120 square feet of heated/cooled space, with a total of 1,202 Square Feet of optional covered area.



GLENN COVE
40' x 28'

3 Bedroom / 2 Bathroom
1,120 Sq. Ft. Heated/Cooled
1,202 Sq. Ft. Under Roof
Optional Covered Porch

The square footage and other dimensions on our floor plans are approximate. Renderings are not intended to be an accurate representation of the home and are often shown with optional features and/or third-party additions that can be added at additional cost if available in your region or situation.

Azalea

The Azalea offers 1,196 Square Feet of heated and cooled living space, with a total of 1,400 Square Feet of optional covered area.



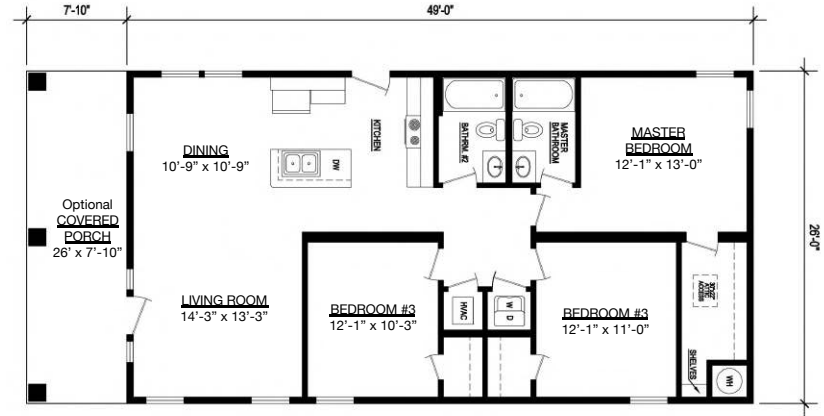
AZALEA
26' x 46'

3 Bedroom / 2 Bathroom
1,196 Sq. Ft. Heated/Cooled
1,400 Sq. Ft. Under Roof
Optional Covered Porch

The square footage and other dimensions on our floor plans are approximate. Renderings are not intended to be an accurate representation of the home and are often shown with optional features and/or third-party additions that can be added at additional cost if available in your region or situation.

Whitney Lake

The Whitney Lake floor plan provides 1,274 square feet of heated/cooled space, with a total of 1,478 square feet of optional under roof space.



WHITNEY LAKE

56'-10" x 26'

3 Bedroom / 2 Bathroom
1,274 Sq. Ft. Heated/Cooled
1,478 Sq. Ft. Under Roof
Optional Covered Porch

The square footage and other dimensions on our floor plans are approximate. Renderings are not intended to be an accurate representation of the home and are often shown with optional features and/or third-party additions that can be added at additional cost if available in your region or situation.

Deerwood

The Deerwood provides 1,302 square feet of heated/cooled living space, with a total of 1,484 Square Feet of optional covered area.



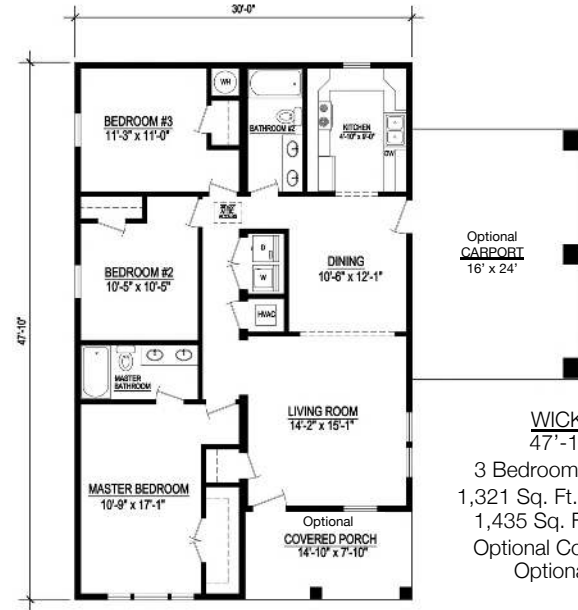
DERWOOD 54' x 28'

3 Bedroom / 2 Bathroom
1,302 Sq. Ft. Heated/Cooled
1,484 Sq. Ft. Under Roof
2 Optional Covered Porches

The square footage and other dimensions on our floor plans are approximate. Renderings are not intended to be an accurate representation of the home and are often shown with optional features and/or third-party additions that can be added at additional cost if available in your region or situation.

Wickliffe

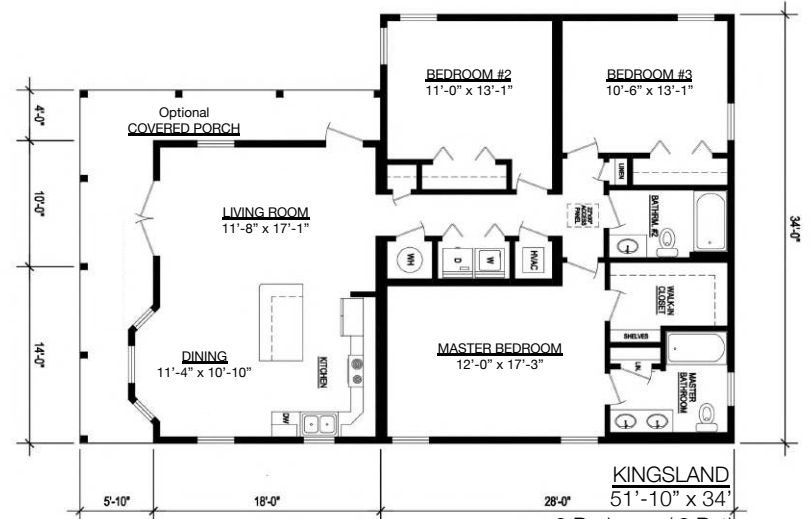
The Wickliffe floor plan provides 1,321 square feet of heated/cooled space, with a total of 1,435 square feet of optional under roof space.



The square footage and other dimensions on our floor plans are approximate. Renderings are not intended to be an accurate representation of the home and are often shown with optional features and/or third-party additions that can be added at additional cost if available in your region or situation.

Kingsland

The Kingsland design offers 1,400 square feet featuring a broad hipped roof over the expansive wrap porch. Include 3 bedrooms and 2 baths with a large open living area that opens onto the porch.

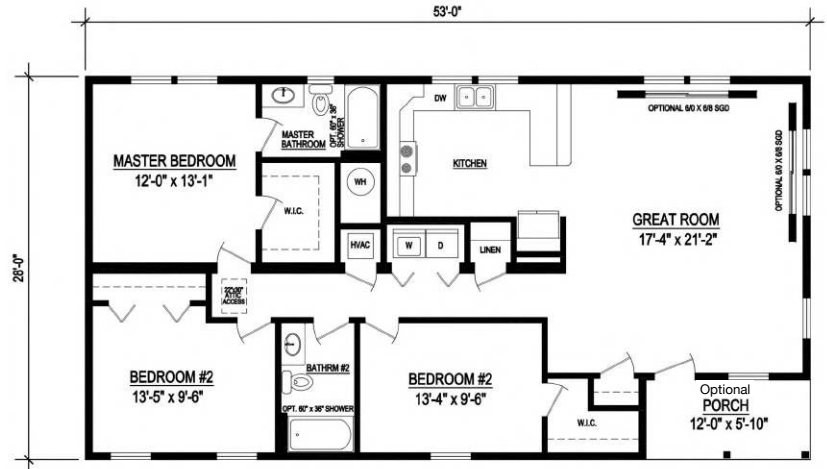


3 Bedroom / 2 Bathroom
1,400 Sq. Ft. Heated/Cooled
1,625 Sq. Ft. Under Roof
Optional Covered Porch

The square footage and other dimensions on our floor plans are approximate. Renderings are not intended to be an accurate representation of the home and are often shown with optional features and/or third-party additions that can be added at additional cost if available in your region or situation.

Peach Blossom

The Peach Blossom offers 1,414 square feet of heated and cooled living space, with a total of 1,484 Square Feet of optional covered area.



PEACH BLOSSOM

53' x 28'

3 Bedroom / 2 Bathroom
1,414 Sq. Ft. Heated/Cooled
1,484 Sq. Ft. Under Roof
Optional Covered Porch

The square footage and other dimensions on our floor plans are approximate. Renderings are not intended to be an accurate representation of the home and are often shown with optional features and/or third-party additions that can be added at additional cost if available in your region or situation.

Dogwood

The Dogwood offers 1,484 square feet of heated/cooled living space.



The square footage and other dimensions on our floor plans are approximate. Renderings are not intended to be an accurate representation of the home and are often shown with optional features and/or third-party additions that can be added at additional cost if available in your region or situation.

Hunter's Creek

The Hunter's Creek floor plan provides 1,488 square feet of heated/cooled space, with a total of 1,608 square feet of optional under roof space.

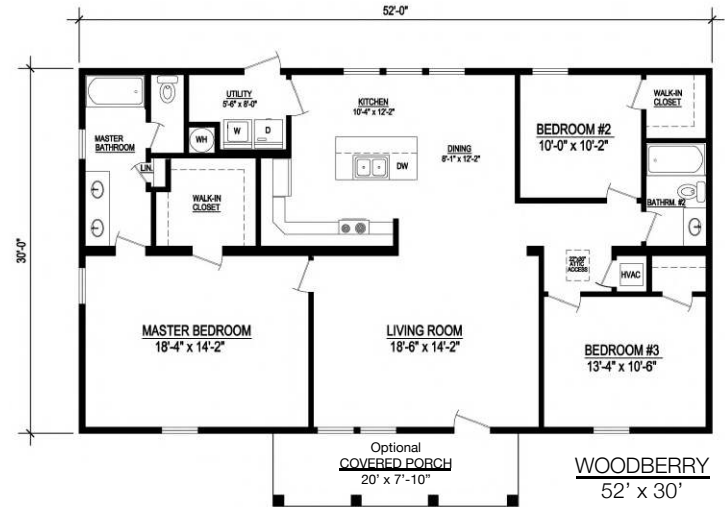


4 Bedroom / 2 Bathroom
1,488 Sq. Ft. Heated/Cooled
1,608 Sq. Ft. Under Roof
Optional Covered Porch

The square footage and other dimensions on our floor plans are approximate. Renderings are not intended to be an accurate representation of the home and are often shown with optional features and/or third-party additions that can be added at additional cost if available in your region or situation.

Woodberry

The Woodberry floor plan provides 1,560 square feet of heated/cooled space, with a total of 1,700 square feet of optional under roof space.



3 Bedroom / 2 Bathroom
1,560 Sq. Ft. Heated/Cooled
1,700 Sq. Ft. Under Roof
Optional Covered Porch

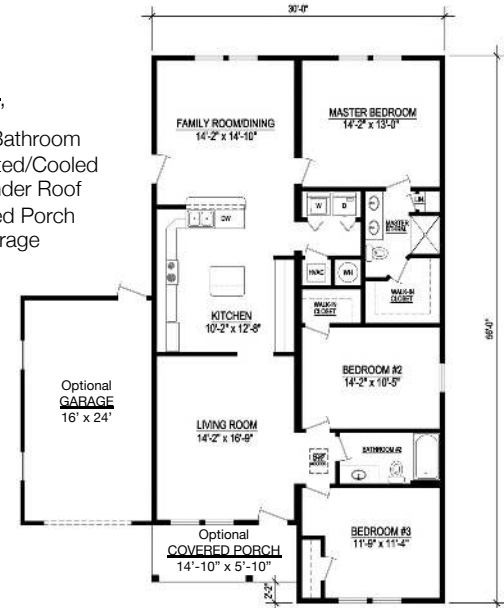
The square footage and other dimensions on our floor plans are approximate. Renderings are not intended to be an accurate representation of the home and are often shown with optional features and/or third-party additions that can be added at additional cost if available in your region or situation.

Grove

The Grove provides 1,561 square feet of heated/cooled space, with a total of 1,650 Square Feet of optional covered area and optional garage.



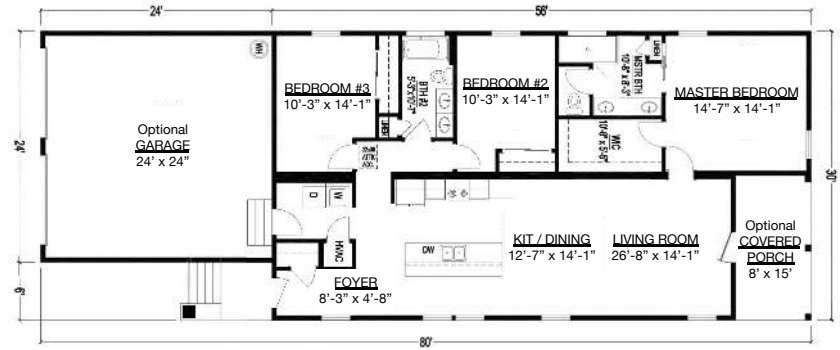
GROVE
56' x 30'
3 Bedroom / 2 Bathroom
1,561 Sq. Ft. Heated/Cooled
1,950 Sq. Ft. Under Roof
Optional Covered Porch
Optional Garage



The square footage and other dimensions on our floor plans are approximate. Renderings are not intended to be an accurate representation of the home and are often shown with optional features and/or third-party additions that can be added at additional cost if available in your region or situation.

Hemby Cottage

The Hemby Cottage provides 1,563 square feet of heated/cooled space, with a total of 2,250 Square Feet of optional covered area and garage.



HEMBLY COTTAGE

80' x 30'

3 Bedroom / 2 Bathroom

1,563 Sq. Ft. Heated/Cooled

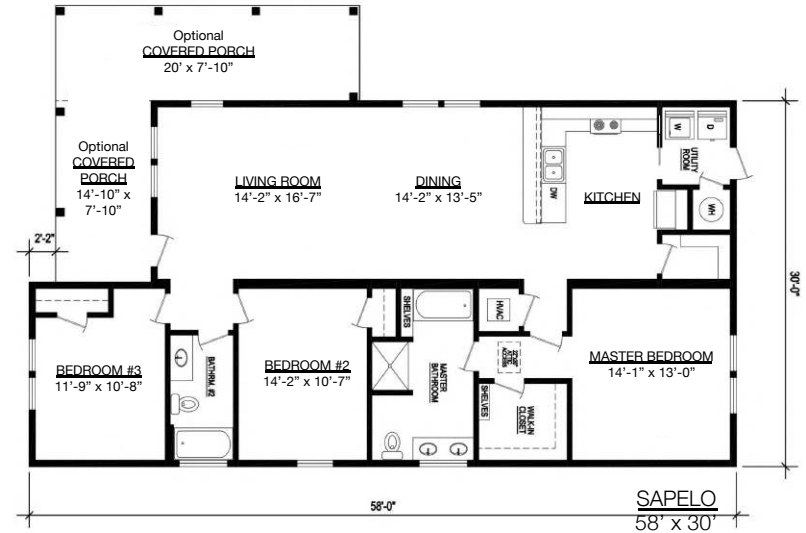
2,250 Sq. Ft. Under Roof

Optional Covered Porch / Optional Garage

The square footage and other dimensions on our floor plans are approximate. Renderings are not intended to be an accurate representation of the home and are often shown with optional features and/or third-party additions that can be added at additional cost if available in your region or situation.

Sapelo

The Sapelo floor plan provides 1,591 square feet of heated/cooled space, with a total of 1,850 square feet of optional under roof space.

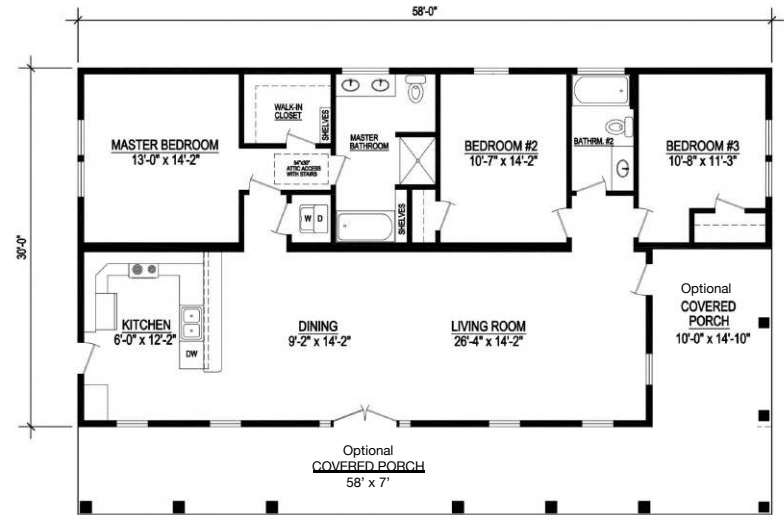


3 Bedroom / 2 Bathroom
1,591 Sq. Ft. Heated/Cooled
1,850 Sq. Ft. Under Roof
Optional Covered Porch

The square footage and other dimensions on our floor plans are approximate. Renderings are not intended to be an accurate representation of the home and are often shown with optional features and/or third-party additions that can be added at additional cost if available in your region or situation.

Piedmont

The Piedmont floor plan provides 1,591 square feet of heated/cooled space, with a total of 2,146 square feet of optional under roof space.



PIEDMONT
58' x 30'

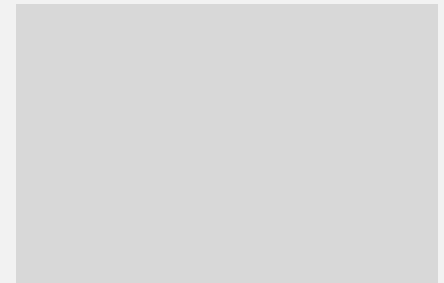
3 Bedroom / 2 Bathroom
1,591 Sq. Ft. Heated/Cooled
2,146 Sq. Ft. Under Roof
Optional Covered Porch

The square footage and other dimensions on our floor plans are approximate. Renderings are not intended to be an accurate representation of the home and are often shown with optional features and/or third-party additions that can be added at additional cost if available in your region or situation. Optional Covered Porch

Two-Story Housing Models

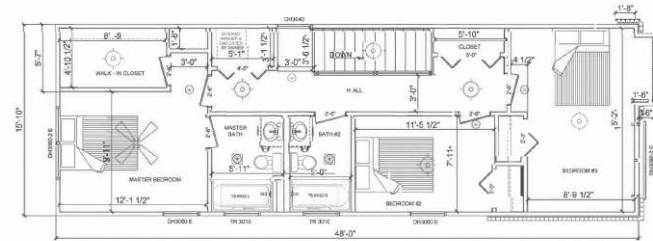


Two-Story Models

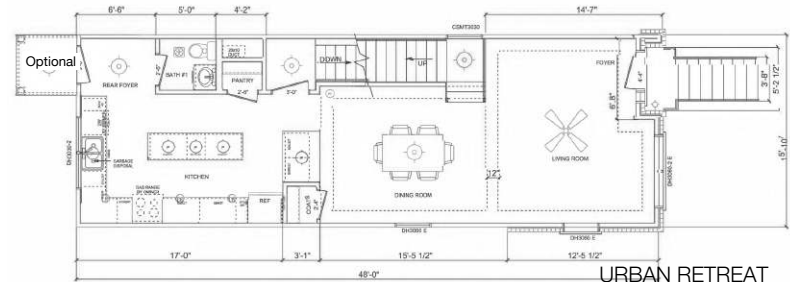


Urban Retreat

The Urban Retreat floor plan provides 1,440 square feet of heated/cooled space in two levels.



2nd LEVEL



1st LEVEL

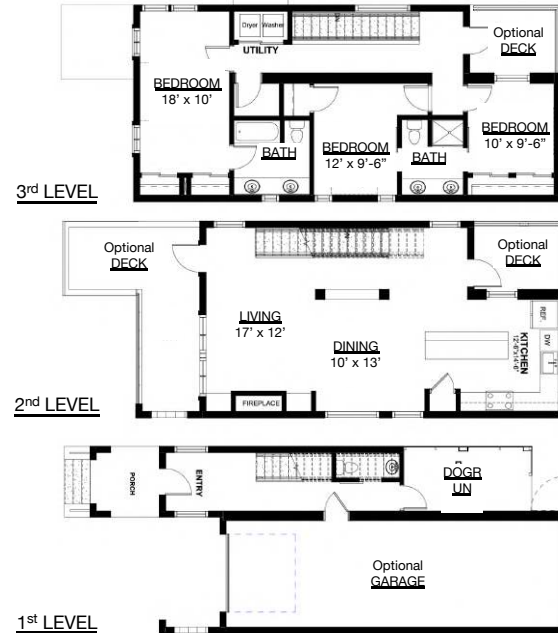
URBAN RETREAT
48' x 15'-10"

3 Bedroom / 2.5 Bathroom
1,440 Sq. Ft. Heated/Cooled

The square footage and other dimensions on our floor plans are approximate. Renderings are not intended to be an accurate representation of the home and are often shown with optional features and/or third-party additions that can be added at additional cost if available in your region or situation.

Kingwood

The Kingwood floor plan provides 2,200 square feet of heated/cooled space divided in three levels with optional terraces and an optional garage unit.

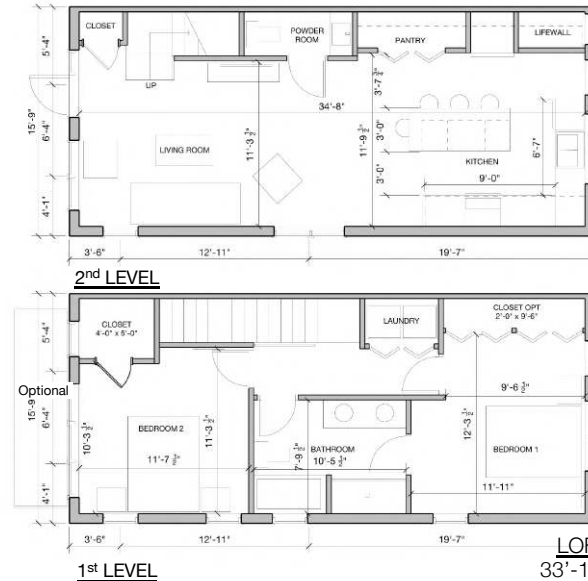


KINGWOOD
47' x 21'-8"
3 Bedroom /
2 Bathroom
2,200 Sq. Ft.
Heated/Cooled

The square footage and other dimensions on our floor plans are approximate. Renderings are not intended to be an accurate representation of the home and are often shown with optional features and/or third-party additions that can be added at additional cost if available in your region or situation.

Loftsville

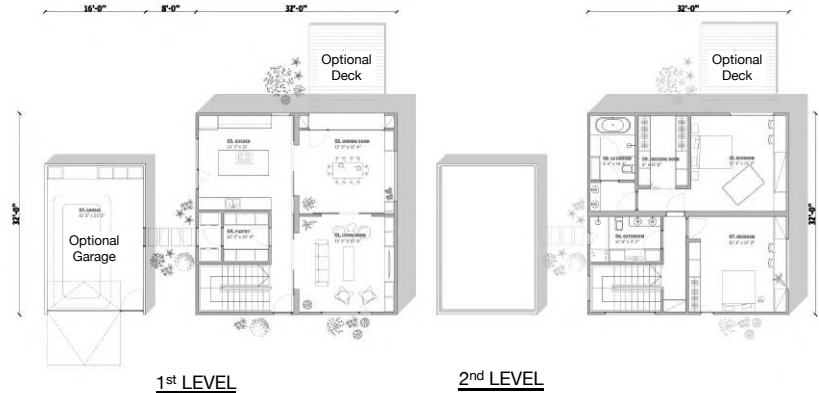
The Loftsville floor plan provides 1200 square feet of heated/cooled space, with optional under-roof space.



The square footage and other dimensions on our floor plans are approximate. Renderings are not intended to be an accurate representation of the home and are often shown with optional features and/or third-party additions that can be added at additional cost if available in your region or situation.

Townhouse Boulevard

The Townhouse Boulevard floor plan provides 1024 square feet of heated/cooled space, with a total of 736 of external optional garage.



TOWNHOUSE BOULEVARD

32' x 32'

2 Bedroom / 2 Bathroom
1024 Sq. Ft. Heated/Cooled
736 Sq. Ft. Optional Garage

The square footage and other dimensions on our floor plans are approximate. Renderings are not intended to be an accurate representation of the home and are often shown with optional features and/or third-party additions that can be added at additional cost if available in your region or situation.

Redfish

The Redfish combines the kitchen and adjacent living areas. 1,488 square feet of heated/cooled space and efficient design with 3 bedrooms and 2 complete baths and a half bath and ground floor.



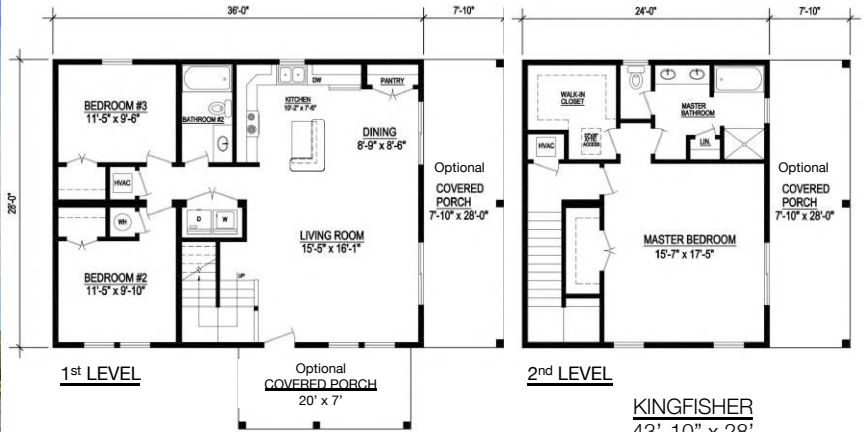
REDFISH
33'-10" x 24'

3 Bedroom / 2.5 Bathroom
1,488 Sq. Ft. Heated/Cooled
1,624 Sq. Ft. Under Roof
Optional Covered Porch

The square footage and other dimensions on our floor plans are approximate. Renderings are not intended to be an accurate representation of the home and are often shown with optional features and/or third-party additions that can be added at additional cost if available in your region or situation.

Kingfisher

The Kingfisher floor plan provides 1,680 square feet of heated/cooled space, with a total of 2,264 optional square feet of under roof space with tree porches.

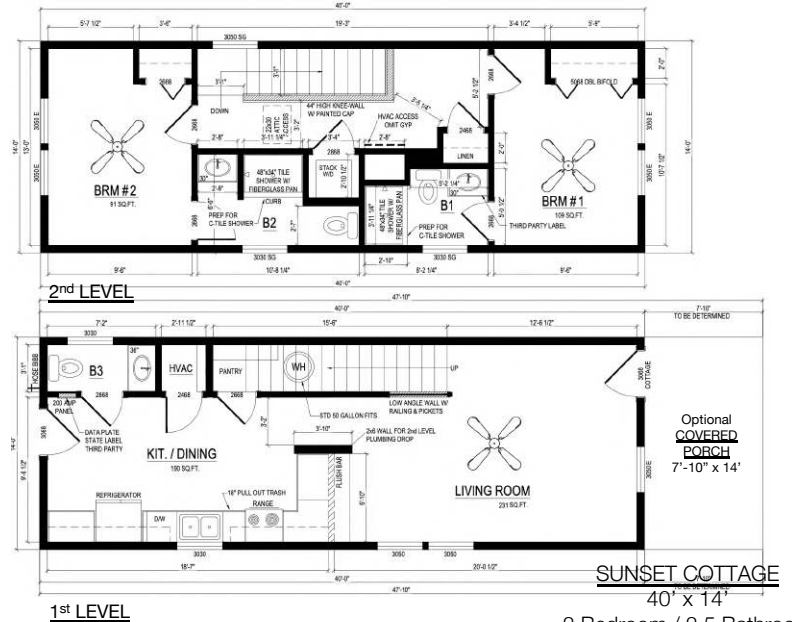


KINGFISHER
43'-10" x 28'
3 Bedroom / 2 Bathroom
1,680 Sq. Ft. Heated/Cooled
2,264 Sq. Ft. Under Roof
3 Optional Covered Porches

The square footage and other dimensions on our floor plans are approximate. Renderings are not intended to be an accurate representation of the home and are often shown with optional features and/or third-party additions that can be added at additional cost if available in your region or situation.

Sunset Cottage

The Sunset Cottage floor plan provides 1,142 square feet of heated/cooled space, with a total of 104 optional square feet of under roof space.



The square footage and other dimensions on our floor plans are approximate. Renderings are not intended to be an accurate representation of the home and are often shown with optional features and/or third-party additions that can be added at additional cost if available in your region or situation.

2 Bedroom / 2.5 Bathroom
1,142 Sq. Ft. Heated/Cooled
104 Sq. Ft. Under Roof

Thanks



VANTEM

naca.com - vantem.com